

# ICE AXE EXPEDITIONS

## 2026 ANTARCTIC PENINSULA ADVENTURE CRUISE

Ice Axe Expeditions is excited to introduce our 2026 Antarctic Peninsula Adventure Cruise. We have chartered a 140-passenger ship, the Ocean Albatros, for a 13 day, 12-night expedition. It is a great mix of international and local adventurers, explorers, and humanitarians. Lock in your spots now and rest easy that you have the cabin of your choice on this once-in-a-lifetime trip to the White Continent. The required deposit is 50% of the total berth price.

### Dates:

October 24-November 5, 2026

### 2026 Cabin Pricing:

French Balcony: \$13,995

Main Deck Balcony: \$15,195

Balcony State Room: \$17,495

Balcony Suite: \$19,195

Junior Balcony Suite: \$21,495

Premium Balcony Suite: \$22,995

Premium Family Suite: \$23,995

*\*all pricing is PER GUEST*

Please refer to page 7 for full cabin details.



### How to Book:

To sign up for the 2026 Antarctic Peninsula Adventure Cruise, [follow this link](#), hit BOOK NOW to select your cabin and adventure options.

## 2026 ANTARCTIC PENINSULA ADVENTURE CRUISE

### Adventure Supplements:

Ski Mountaineering: \$2,400

Ski Mountaineering + Kayaking: \$2,800

Sea Kayaking (non-skiers): \$700

Snowshoe Trekking: \$1,200

Single Room Supplement: \$4,900 (*Main Deck and Balcony Staterooms only*)

2-Day Ushuaia Ski Tour -- Antarctic Prep Clinic\*: \$1,500

\*October 21-22, 2026

- *All pricing is per person, USD*
- *All cabins are double occupancy*
- *Contact our office to discuss accommodations for children and triple occupancy*

### Itinerary:

OCTOBER 24th - Arrive in Ushuaia, Argentina. Orientation with ski or trekking guide. Welcome Dinner. Overnight in Ushuaia.

OCTOBER 25th - Board the Ocean Albatros and set sail down the Beagle Channel.

OCTOBER 26th - Cross the Drake Passage. Sperm, fin, and humpback whales, along with skies of seabirds will accompany our journey.

OCTOBER 27th - Continue crossing the Drake Passage, possible afternoon ski and trekking objectives at Deception Island in the South Shetlands.

OCTOBER 28th - Ski and trekking objectives at Charlotte Bay and Bluff Island.

OCTOBER 29th - Ski and trekking objectives at Nansen and Enterprise Islands. Zodiac cruises, penguin rookeries, and kayaking.

OCTOBER 30th - Ski and trekking objectives at Wenke Island and Damoy Point. Lemaire Channel.

OCTOBER 31st - Ski and trekking objectives at Ronge Island, Mt. Britannia. Visit penguin rookery at Georges Point on Cuverville Island.

NOVEMBER 1st - Ski and trekking objectives on Brabant Island at Chiguano Bay. Killer whale and leopard seal sightings. Zodiac cruises, penguin rookeries, and kayaking.

NOVEMBER 2nd - New ski descents and nature cruises Livingston Island and Half Moon Bay in the South Shetlands. Zodiac cruises, penguin rookeries, and kayaking; begin journey north in the evening.

NOVEMBER 3-4th - Sail Drake Passage; pass the dramatic cliffs of Cape Horn.

NOVEMBER 5th - Disembark the Ocean Albatros in Ushuaia, Argentina.

*\*Flexibility is necessary for all Antarctic travel. This program is subject to change throughout the journey depending on ice, weather, and local conditions.*

### A Typical Day:

7-8am: Breakfast

8-9am: Disembark on zodiacs for morning ski

12:30-2pm: Return to ship for lunch

2-5:30pm: Afternoon ski, kayak or trek

7pm: Dinner

9pm: Evening talk/presentation from ski guide or expedition staff

### What's Included:

- 1-night pre-expedition shared hotel accommodation in Ushuaia, Argentina. This room includes a continental breakfast.
- Group welcome dinner in Ushuaia.
- Group transfers from the hotel to the ship on embarkation and from the ship to the airport on disembarkation and all miscellaneous service taxes and port charges.
- Breakfast, lunch, and dinner on board the Ocean Albatros.
- Shore landings and Zodiac excursions as permitted by weather and local conditions.
- Ski guide services, maintaining a 4:1 client to guide ratio
- Wifi on board the Ocean Albatros
- Presentations by our Expedition Team and guest speakers.
- Comprehensive pre-departure information package.
- Use of a pair of rubber expedition boots on loan for shore landings. These will be returned at the end of the voyage.
- Photographic trip-log shared after the voyage.

### Not Included:

- Airfares to or from your home city, whether on scheduled or charter flights.
- Passport and visa expenses. Tourist entry fees may apply depending on your nationality.
- Any government arrival and departure airport taxes.
- Ski or trekking equipment.
- Any meals ashore with the exception of breakfast at the host hotel and the welcome dinner on the evening prior to departure.
- Baggage, cancellation, and travel insurance (emergency medical and evacuation insurance is mandatory).
- Excess baggage charges.
- Laundry, bar, beverage, and other personal charges onboard the ship or at the hotel.
- Telecommunications and wifi charges or the customary gratuity at the end of the voyage for stewards, guides, and other service personnel.
- Tips for guides and hospitality staff.

### FAQs:

*How do I reserve my trip?*

To sign up for the 2026 Antarctic Peninsula Adventure Cruise you can [register online](#) or contact Ice Axe Expeditions at 530-582-1246 or via email at [questions@iceaxe.tv](mailto:questions@iceaxe.tv).

### **FAQs:**

#### *What is the weather like?*

The weather in Antarctica is extremely unpredictable. Heavy rainfall is unusual; strong winds are relatively common, so it is important to pack accordingly. The average temperatures on the Antarctic Peninsula during the summer months' range from approximately 23° - 41° F. The weather in Ushuaia is a bit warmer but also has the wind and rain characteristics of the Antarctic weather systems.

#### *You say the weather can be unpredictable. What happens if there are delays?*

If any trip must be delayed due to bad weather, cancelled or delayed transportation, sickness or any other situation for which Ice Axe Expeditions cannot make provisions, all costs incurred during such delays must be borne by trip members.

#### *What if I need to cancel?*

All requests for cancellations must be received in writing. Cancellations received by June 1, 2026 or prior are refunded less an administrative fee of \$750 per person. Cancellations received between June 2, 2026 and July 31, 2026 will be subject to forfeit the deposit. Please note that for cancellations received after July 31, 2026 of which full payment has not yet been received, the full penalty will still apply, and unpaid monies are due immediately. For these and other reasons mentioned, you are strongly encouraged to obtain trip cancellation insurance. Prices quoted are based on group participation and no refunds will be made for any part of the program in which you choose not to participate.

#### *What is the COVID-19 Policy?*

Please check health requirements of destination and transit countries, as well as those of transport services (airlines). In the two weeks prior to travel, we recommend you closely monitor your health, do a symptom self-check regularly, and practice good hygiene (physical distancing, hand washing, limited social interactions, avoid social events and gatherings in badly ventilated spaces). If you test positive in Ushuaia you will not be able to board the ship. We strongly recommend guests to purchase travel insurance that covers any isolation costs.

### **Insurance:**

We require that you have at least \$200,000 in medical evacuation insurance. Your insurance policy should cover hazardous sports and we recommend that your policy cover search and rescue. Since we cannot confirm each client's policy individually, it is your responsibility to make sure your policy will cover you while you participate in your activities of choice on the expedition. We also always encourage you to purchase TRIP CANCELLATION insurance in addition to the mandatory medical evacuation insurance, though it is not required.

For US citizens, we recommend the [Travelers Travel Select Insurance](#). Additional insurance recommendations can be found [here](#).

You are welcome to seek out other insurance options, as these are only recommendations. When selecting a policy, please make sure they insure a) the region of Antarctica, b) ski mountaineering-which involves the use of ropes, crampons, ice axes and is a guided activity. Ski mountaineering is not considered the same as skiing by many insurers, and you need to confirm that they will cover this activity.





### 2-Day Ushuaia Ski Tour -- Antarctic Prep Clinic:

Location: Martial Glacier, Ushuaia

Cost: \$1,500 USD

Dates: October 21-22, 2026 – 9am-4pm

Our 2-Day Ushuaia Ski Tour – Antarctic Prep Clinic is the perfect opportunity to make the most of your Antarctic adventure by brushing up on skiing, backcountry basics and glacier travel in Ushuaia before you head out. Led by experienced Ice Axe Expeditions guides on the Martial Glacier in Ushuaia which features conditions very similar to what we might find in Antarctica. For those that would like some guidance on gear and skiing glaciated terrain you'll have some workshop time with your guide – for those a bit more experienced you'll focus purely on skiing! The class size is limited to four skiers/riders per guide and takes place on the Martial Glacier, which is a short ten minute drive from downtown Ushuaia.

#### *Itinerary for Antarctic Prep/Glacier Travel Clinic:*

Day 1: We'll attach skis onto packs and walk a short distance up to the snowline before transitioning into ski mode where we will cover beacons, avalanche awareness, efficient skinning, kick turns, heel lifters, ski crampons, transitions, gear organizing and glacier skiing strategies.

Day 2: A similar format to day one, but with more technical information. Topics include roping up for glacier travel, using boot crampons and an ice axe, and climbing steeper terrain on foot.

Course participants should bring all the equipment on the Ice Axe Expeditions gear list to each day of the clinic and be prepared for 5-7 hours of skiing. Unless participants arrive with a preformed group of four or more, they will be broken into groups depending on experience. No prior backcountry skiing experience is required for these clinics.

Includes 2 full days of guided skiing and hotel accommodations in Ushuaia from October 20-28, 2026.

**You must arrive in Ushuaia on October 20th to participate.**

Please be sure to select the 2-Day Ushuaia Ski Tour -- Antarctic Prep Clinic option when registering online or email us at [questions@iceaxe.tv](mailto:questions@iceaxe.tv) to notify us of your desire to participate.

## 2026 ANTARCTIC PENINSULA ADVENTURE CRUISE

### The Ship:

Ice Axe Expeditions is proud to introduce our new vessel, the Ocean Albatros, as our Antarctic home. With a total of 93 comfortable staterooms for our guests, all with a view of the ocean, (and 90% with their own balcony), several restaurants, a wellness area, an Albatros Nordic Bar, an open deck dining facility, a modern lecture lounge, and other amenities, the vessel will also be environmentally friendly onboard, with an implementation of the Green Initiative Program, ensuring both absolute comfort and sustainability for our guests.



*Beagle Restaurant, deck 5*



*Panorama Restaurant, deck 8*



*BBQ Deck, deck 8*



*Observation Lounge, deck 8*



*Nordic Bar and Lounge, deck 5*



*Gym, deck 7*



### Ocean Albatros Cabin Details:



#### French Balcony

Double occupancy: \$13,995 per guest

The French Balcony Suite is a standard stateroom with a French balcony/floor-to-ceiling windows, a **double bed plus a pull out sofa**, and a bathroom. All French Balcony Suites are located on Deck 7. 172 square feet.



#### Main Deck Balcony

Double occupancy: \$15,195 per guest

Main deck balcony stateroom, located on deck 4. These are conveniently located staterooms close to the Mudroom which facilitates access to the Zodiacs during embarkation and disembarkation to begin your adventures on the Zodiacs. Featuring a **double bed or two single beds**, a bathroom, and a private balcony. 250 square feet.

#### Balcony Stateroom

Double occupancy: \$17,495 per guest

Triple Adult: \$15,195/pp

Triple Child only: \$13,995/pp

The Balcony Staterooms are located on deck 6. They have a private balcony, a **double bed or two single beds**, and a bathroom. 258 square feet.

### Ocean Albatros Cabin Details (cont'd):



#### Balcony Suite

Double occupancy: \$19,195 per guest

The Balcony Suites are located on deck 4 and deck 6. The suites feature a **double bed or two single beds**, a seating area, bathroom, and a large private balcony. 376 square feet. Includes a special VIP package: wine and fruit stocked minibar upon arrival, free laundry service, Julius Meinl espresso machine in-room, upgraded hair & lotion products.



#### Junior Balcony Suite

Double occupancy: \$21,495 per guest

Triple Adult: \$19,995/pp

Triple Child only: \$14,995/pp

The Junior Suites have a great view from their location high up on deck 7. The suites feature a **double bed or two single beds, a sofa bed**, seating area, a spacious bathroom and private balcony. The suite can accommodate up to 3 people, please inquire about triple occupancy pricing. 452 square feet. Includes a special VIP package: wine and fruit stocked minibar upon arrival, free laundry service, Julius Meinl espresso machine in-room, upgraded hair & lotion products.



### Ocean Albatros Cabin Details (cont'd):



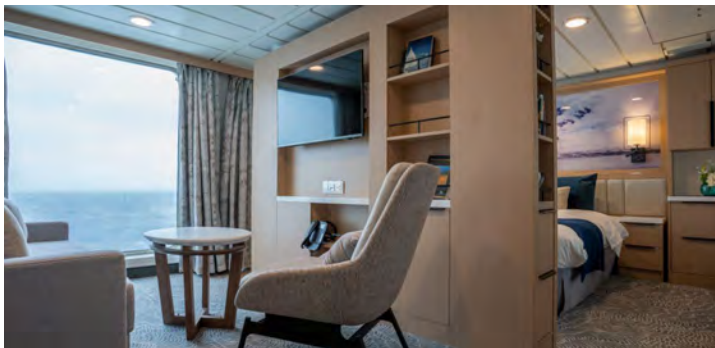
#### Premium Balcony Suite

Double occupancy: \$22,995 per guest

Triple Adult: \$19,995/pp

Triple Child only: \$14,995

The Premium Balcony Suite is located on deck 4. This 2-bedroom suite features a **double bed or two single beds, a sofa bed**, table and chair, a balcony, and a spacious bathroom. 484 square feet. Includes a special VIP package: wine and fruit stocked minibar upon arrival, free laundry service, Julius Meinl espresso machine in-room, upgraded hair & lotion products.



#### Premium Family Suite

Double occupancy: \$23,995 per guest

Triple Adult: \$20,995/pp

Quad Adult: \$18,995/pp

Triple/Quad Child only: \$15,195/pp

The Double-Bedroom, Premium Family Suite is located on Deck 7, accommodating up to 4 people on **two double beds and a sofa bed** with two ensuite bathrooms.

#### **How to Book:**

To sign up for the 2026 Antarctic Peninsula Adventure Cruise, [follow this link](#), hit BOOK NOW to select your cabin and adventure options. You will be able to create a portal where you can track your submitted orientation material and submit payments.

We look forward to having you join us in October 2026 on this trip of a lifetime! Don't hesitate to contact us with any questions, (530) 582-1246 or [questions@iceaxe.tv](mailto:questions@iceaxe.tv).